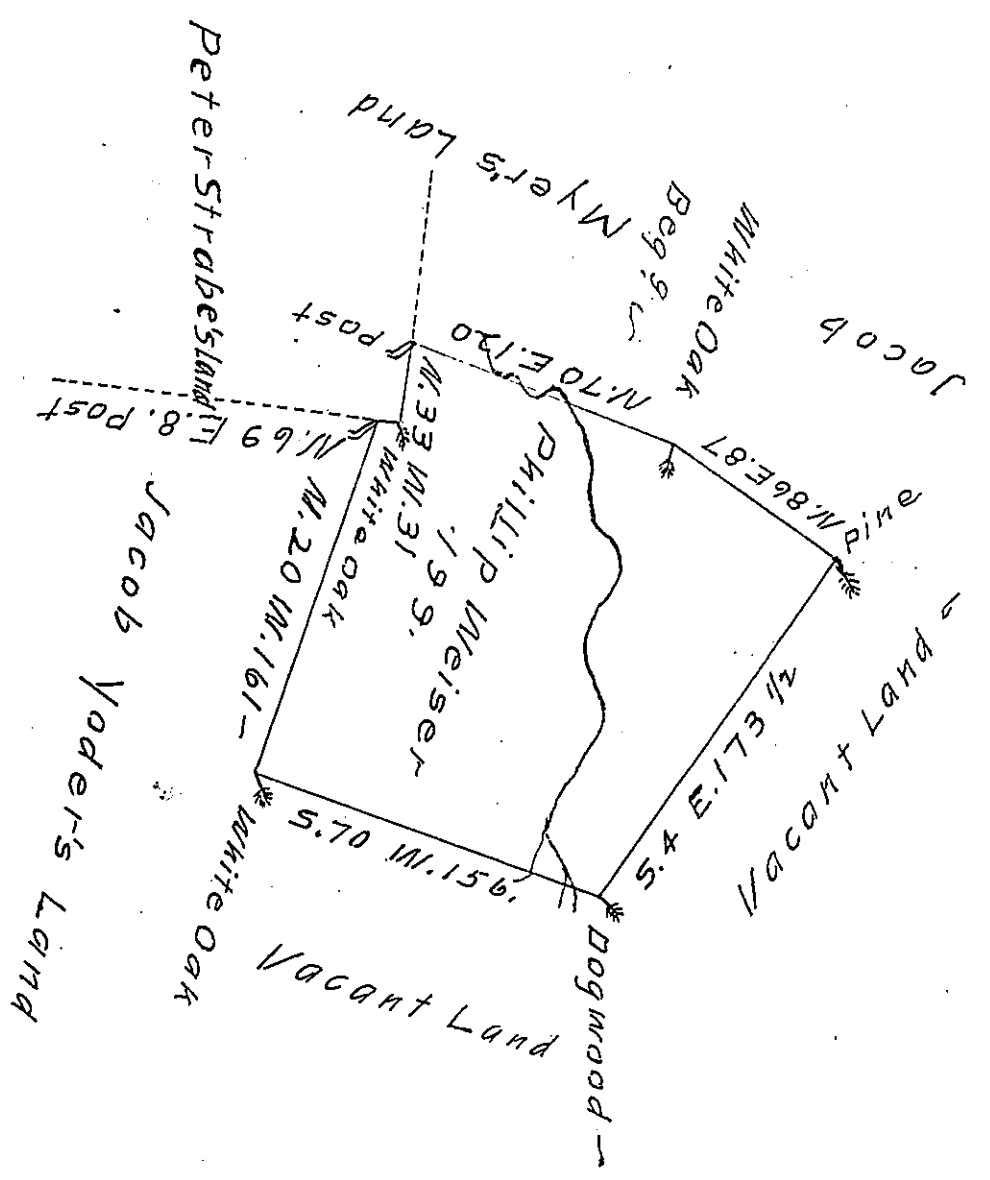


FORM No. 1.



The Draught of a Tract of Land called \_\_\_\_\_  
 Situate in the Dutch Valey near Middle Creek, Gum-  
 berland County, containing One Hundred Ninety Nine  
 Acres with the usual Allowance of Six Acres ~~of~~ <sup>for</sup> Gent.  
 for Roads. Survey'd ~~the~~ the 26th day of October  
 Anno Dom: 1765 In Pursuance of a Warrant from  
 the Hon<sup>ble</sup>. Props to Phillip Weiser Bearing Date  
 at Philad<sup>a</sup> the 14th day of March Anno Dom: 1755 ✓

W<sup>m</sup> Maclay D.S.

To John Lukens Esq<sup>r</sup> S. G.  
 of Pennsylvania - }

IN TESTIMONY that the above is a copy of the original remaining on file in  
 the Department of Internal Affairs of Pennsylvania, made  
 conformably to an Act of Assembly approved the 16th day of  
 February 1833, I have hereunto set my hand and caused  
 the Seal of said Department to be affixed at Harrisburg,  
 this 27<sup>th</sup> day of August 1907

*Henry Houck*  
 Secretary of Internal Affairs.